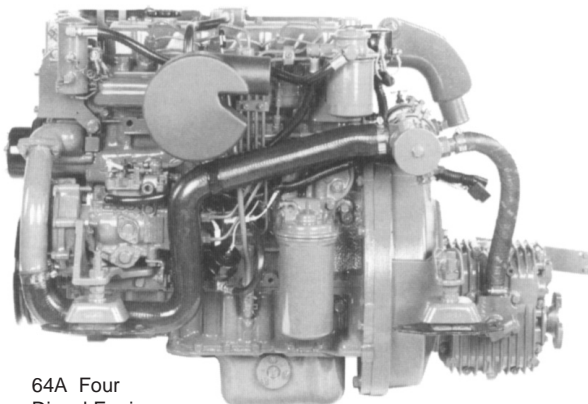
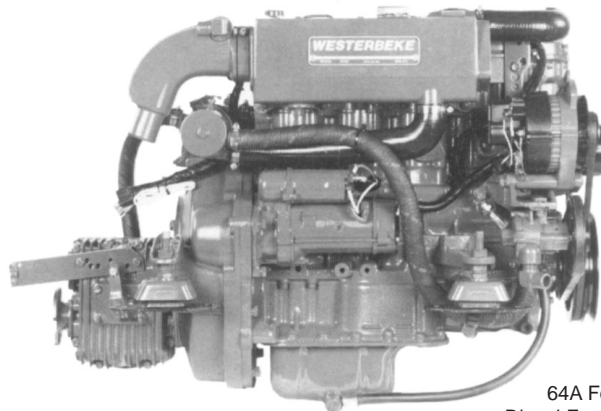




Extra low-end power at 2600-rpm ...



64A Four
Diesel Engine



64A Four
Diesel Engine

Smooth and Quiet

The 64A Four offers 4-cylinder, 4-cycle smoothness. A tuned air intake silencer and 4-point vibration mounts diminish sound and vibration for a smooth and quiet ride.

Powerful and Reliable

The naturally aspirated 2.18 liter design of the 64A Four provides instant power as well as simplicity and reliability. The 64A Four is rated at a low 2600-rpm for longer engine life and delivers dependable power.

Easy Operation and Maintenance

In order to minimize engine maintenance, a fresh water cooling system and self-bleeding fuel system are designed into the 64A Four. Some benefits are a standard front-mounted, raw water pump as well as a positive flow, hot water heater connection in the thermostat bypass circuit.

Many Optional Accessories

Many optional accessories are available including large single and dual output battery charging alternators and refrigeration compressor mounts. Factory engineered and factory installed, an owner or builder benefits from these complete and properly designed systems.

The Name You Can Trust

The presence of Westerbeke in over 65 countries around the world provides customers with easy access to parts, service and technical support worldwide. Established in 1937, Westerbeke is committed to providing its customers with quality products and unequalled after sales support.

Standard Features

- Engine pre-wired to plug-in connector
- Circuit breaker protected electrical system
- Self-bleeding fuel system
- Belt-driven, raw water pump
- Fresh water cooled engine
- Fresh water lube oil cooler
- Transmission oil cooler
- 12 volt, 50 amp alternator
- Domestic hot water connection
- Coolant recovery tank
- Throttle, stop, and shift control brackets
- Low oil pressure and high water temperature alarms
- Marine transmission with 2:1 reduction
- Glow plug cold starting aid
- Engine matched four-point, fail-safe, adjustable mounts
- Lube oil drain hose
- Tuned air intake silencer
- Operators' manual and parts list
- "CE" mark
- Large list of factory engineered options

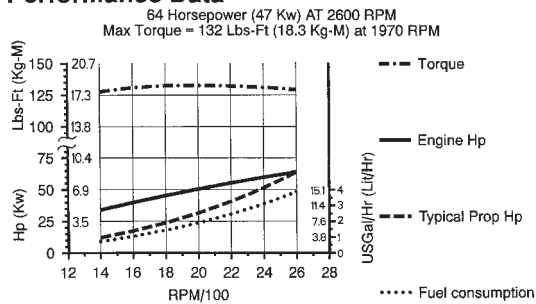


Optional Admiral Panel

Admiral Panel Dimensions

| | |
|--------|------------------|
| Length | 9.75" (247.7 mm) |
| Depth | 4.0" (101.6 mm) |
| Height | 6.0" (152.4 mm) |

Performance Data



Westerbeke recommends a propeller that will allow the engine to turn 2600 RPM underway at full throttle

Construction – Engine Components

| | |
|------------------|--|
| Cylinder head | Cast Iron |
| Cylinder block | Cast Iron |
| Crankshaft | Forged crankshaft, five main bearings |
| Valves | Overhead valves, rotating type |
| Fuel System | Self bleeding |
| Intake system | Tuned intake silencer for maximum noise reduction |
| Cooling system | Fresh water-cooled with oversized tube and shell type heat exchanger |
| Exhaust manifold | Cast aluminum, fresh water-cooled with built-in expansion tank |

Standard Equipment

| | |
|---|--|
| Standard gear ratio | 2:1 |
| Mounting centers | 18.5", 20.0" & 22.5" |
| Flexible mounts | Oversized adjustable fail-safe rubber type |
| Domestic hot water connection | |
| Coolant recovery tank | |
| Battery charging alternator | 50 amp, 12 volt |
| Starting aide | |
| Control brackets | Throttle and shift |
| Prewired Engine | |
| Belt-driven sea water pump | |
| Lube oil cooler in fresh water system | |
| Lube oil drain hose | |
| Transmission oil cooler | |
| Oil fill | Top |
| Circuit breaker protected electrical system | |
| Operator's Manual and Parts List | |

Optional Equipment

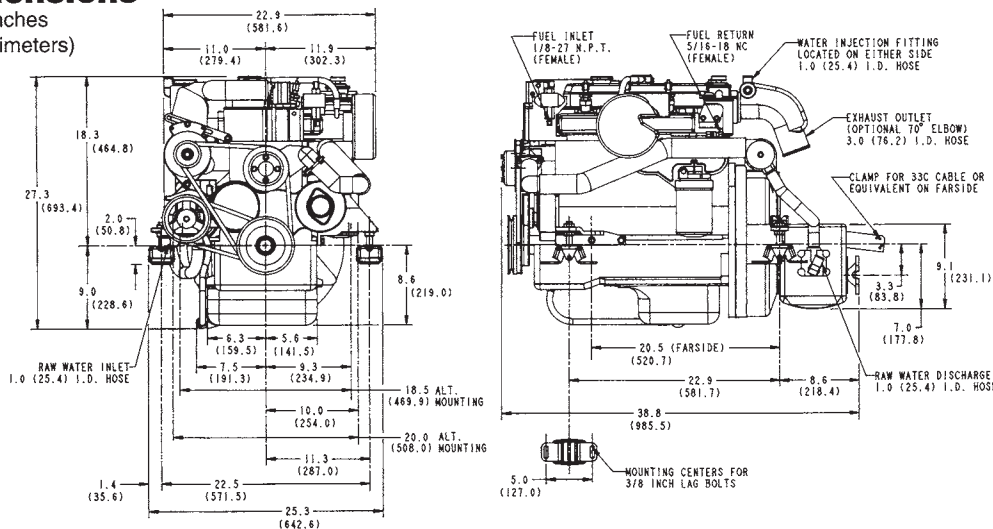
| | |
|---|---------------------------|
| Captain panel with alarm (tachometer with lights) | |
| Admiral panel with alarms (tachometer with gauges) | |
| Dual station senders | |
| Other gear ratios | Consult local Distributor |
| Hydraulic transmissions | Consult local Distributor |
| Remote expansion tank | |
| Provisions for refrigeration compressor | |
| Muffler and fittings | |
| "A" and "B" on board spare parts kits | |
| Alternator, 90 amp single output; 135, 160, 190 dual output | |
| Anti-siphon valve for overboard cooling discharge water | |
| Technical Manual | |
| Exhaust connection (water injected 70° elbow) | |
| Propeller shaft couplings (rigid/flexible) – available standard sizes | |

Specification

| | |
|--|--|
| Number of cylinders | 4 Cylinder vertical in-line |
| Cycles | 4 Cycle |
| Displacement | 182 cu. in. (2.977 liter) |
| Bore and stroke | 3.74" x 4.13" (95 mm x 105 mm) |
| Compression ratio | 21:1 |
| Maximum angle of installation | Not to exceed 14° |
| Maximum angle of operation | Not to exceed 25° |
| Crankshaft, direction of rotation | Counterclockwise as viewed from flywheel end |
| Propeller shaft, direction of rotation | Right hand – std. trans. |
| Dry weight | 678 lbs (307.5 kilos) |
| Combustion system | Swirl type |
| Aspiration | Naturally aspirated |
| Lubrication system | Forced lubrication by gear pump |
| Cooling system | 13 quarts (12.3 liters) |
| Starting aid | 12 volt sheathed type glow plug |
| Engine stop | Electric |
| Fuel injection pump | Bosch type |
| Governor | Centrifugal type |
| Injectors | Throttle type |
| Fuel filter | Full flow, spin-on element |
| Lube oil filter | Full flow, spin-on element |
| Lubricant capacity | 6.5 quarts (6.2 liters) |
| Lube oil cooler | Fresh water cooled |
| Fuel transfer pump | Electrical |
| Fuel supply and return piping | 1/4" ID (6.35 mm) minimum 3/8" ID (9.53 mm) maximum |
| Starting motor | 12 volt, solenoid, actuated shift |
| Battery charging alternator | 50 ampere (12 volts) |
| Cold cranking amps | 250-300 amps |
| Electrical system | 12 volts DC, negative ground |

Dimensions

inches
(millimeters)



Authorized Dealer